



# **Airport Traffic Report** **January 2008**

## European passenger traffic up 4.7% during January 2008

The 'ACI EUROPE Airport Traffic Report - January 2008' includes **106 airports** in total.

The overall **passenger** traffic at European airports increased by **+4.7%** in **January 2008** compared with January 2007. The overall **freight** traffic among European airports increased **+4.6%** in January 2008 when compared with the corresponding month in 2007. The overall figure for **movements** at European airports increased **+3.2%** in January 2008 when compared with January 2007.

Passenger figures for January 2008 indicate that Group 4 airports (airports welcoming less than 5 million passengers per year) had the largest increase in traffic - with an average increase of **+6.5%** when compared with January 2007 - and an average increase of **+16.2%** when compared with January 2006.

Airports welcoming more than 25 million passengers per year (Group 1), airports welcoming between 10 and 25 million passengers (Group 2) and airports welcoming between 5 and 10 million passengers (Group 3) reported an average increase of **+3.2%**, **+6.1%** and **+4.4%** respectively when compared with January 2007. The same comparison of January 2008 with January 2006 demonstrates an average increase of **+8.4%**, **+15.0%** and **+10.9%** respectively.

Examples of airports that experienced the highest increase in passenger traffic per group, when comparing January 2008 with January 2007, include:

- **Group 1 airports** – Madrid (**+10.0%**), Munich (**+8.5%**) and Rome Fiumicino (**7.2%**);
- **Group 2 airports** – Berlin (**+23.3%**), Moscow- Domodedovo (**+21.5%**) and Brussels (**+15.7%**);
- **Group 3 airports** – Moscow-Vnukovo (**+36.1%**), Nottingham East Midlands (**+16.0%**) and Alicante (**+13.4%**);
- **Group 4 airports** – Girona (**+47.7%**), Vilnius (**+30.7%**) and Bucharest (**+29.8%**).

Airports		Passengers		Commercial movements		Freight (metric tonnes)	
		January 2008	2008v 2007 variation %	January 2008	2008v 2007 variation %	January 2008	2008v 2007 variation %
1	<b>London Heathrow</b> (LHR)	4,975,051	-1.3%	38,739	-1.0%	105,475	10.3%
2	<b>Paris Roissy</b> (CDG)	4,388,493	2.3%	44,079	1.1%	N/A	N/A
3	<b>Frankfurt</b> (FRA)	3,957,636	3.7%	37,076	1.0%	154,337	4.4%
4	<b>Madrid</b> (MAD)	3,846,898	10.0%	39,637	4.4%	25,675	1.3%
5	<b>Amsterdam</b> (AMS)	3,204,631	0.9%	32,519	-0.5%	124,926	7.9%
6	<b>Munich</b> (MUC)	2,398,856	8.5%	30,521	5.3%	19,308	6.8%
7	<b>London Gatwick</b> (LGW)	2,224,455	0.8%	19,367	1.5%	11,644	-12.6%
8	<b>Rome-Fiumicino</b> (FCO)	2,207,212	7.2%	26,434	5.4%	8,681	5.6%
9	<b>Barcelona</b> (BCN)	2,074,369	2.8%	26,122	-2.2%	7,369	-6.0%
10	<b>Paris Orly</b> (ORY)	2,025,210	0.7%	19,486	0.7%	N/A	N/A
11	<b>Milan-Malpensa</b> (MXP)	1,753,504	3.3%	21,225	2.3%	35,481	10.1%
12	<b>Dublin</b> (DUB)	1,570,611	7.5%	16,200	9.5%	7,361	-9.7%
13	<b>Zurich</b> (ZRH)	1,537,220	8.4%	18,430	6.6%	21,079	5.6%
14	<b>Copenhagen</b> (CPH)	1,521,309	4.4%	21,075	4.5%	N/A	N/A
15	<b>London Stansted</b> (STN)	1,453,131	-9.3%	14,023	-7.9%	16,933	6.1%
16	<b>Moscow-Domodedovo</b> (DME)	1,371,209	21.5%	14,697	18.4%	7,594	18.2%
17	<b>Oslo</b> (OSL)	1,368,680	8.3%	17,580	7.7%	6,042	6.6%
18	<b>Helsinki</b> (HEL)	1,359,516	3.2%	14,769	2.7%	8,514	-16.3%
19	<b>Manchester</b> (MAN)	1,346,745	-1.9%	14,378	-5.7%	12,136	6.8%
20	<b>Stockholm-Arlanda</b> (ARN)	1,332,395	5.7%	16,993	7.2%	7,449	-0.2%
21	<b>Vienna</b> (VIE)	1,314,531	14.5%	20,687	11.4%	14,448	5.5%
22	<b>Brussels</b> (BRU)	1,199,181	15.7%	19,500	11.0%	62,241	15.5%
23	<b>Düsseldorf</b> (DUS)	1,171,952	5.9%	16,606	6.1%	3,875	-14.3%
24	<b>Athens</b> (ATH)	1,020,321	5.4%	13,565	1.5%	8,088	7.1%
25	<b>Berlin</b> (TXL)	999,534	23.3%	12,187	13.6%	1,345	19.8%
26	<b>Geneva</b> (GVA)	985,851	6.2%	11,897	4.7%	2,199	3.1%

Airports		Passengers		Commercial movements		Freight (metric tones)	
		January 2008	2008v 2007 variation %	January 2008	2008v 2007 variation %	January 2008	2008v 2007 variation %
27	<b>Lisbon</b> (LIS)	910,244	7.8%	11,200	2.6%	6,321	3.0%
28	<b>Gran Canaria</b> (LPA)	905,385	0.8%	9,626	3.3%	3,070	-4.1%
29	<b>Hamburg</b> (HAM)	866,632	8.4%	N/A	N/A	3,344	10.9%
30	<b>Palma de Mallorca</b> (PMI)	797,056	2.2%	9,289	-0.8%	1,388	-15.2%
31	<b>Tenerife Sur</b> (TFS)	774,610	0.9%	5,610	-1.0%	755	-0.3%
32	<b>Prague</b> (PRG)	754,932	6.3%	11,849	-0.2%	3,411	-1.0%
33	<b>Milan Linate</b> (LIN)	706,742	1.2%	8,237	-2.4%	N/A	N/A
34	<b>Malaga</b> (AGP)	698,874	0.3%	7,966	2.0%	391	-10.2%
35	<b>Cologne/Bonn</b> (CGN)	654,533	-1.2%	9,516	-7.2%	46,319	-19.0%
36	<b>Stuttgart</b> (STR)	616,335	-1.0%	9,598	3.8%	1,625	12.8%
37	<b>Nice</b> (NCE)	602,633	1.4%	8,565	1.0%	527	-19.1%
38	<b>Edinburgh</b> (EDI)	592,226	4.5%	8,964	-1.5%	1,680	6.0%
39	<b>Lyon</b> (LYS)	564,312	7.2%	10,561	2.7%	2,868	-10.8%
40	<b>Birmingham</b> (BHX)	576,281	-0.1%	7,620	-7.4%	1,081	27.5%
41	<b>Alicante</b> (ALC)	542,725	13.4%	5,259	10.4%	357	2.0%
42	<b>Budapest</b> (BUD)	539,320	6.6%	8,744	2.9%	4,541	-9.4%
43	<b>Glasgow</b> (GLA)	508,882	-6.5%	6,415	-11.7%	297	-5.1%
44	<b>Marseille</b> (MRS)	475,355	3.1%	7,728	5.7%	3,534	8.6%
45	<b>Moscow-Vnukovo</b> (VKO)	474,439	36.1%	10,373	35.7%	1,193	7.4%
46	<b>Toulouse</b> (TLS)	469,822	2.1%	6,425	-1.2%	2,017	-4.6%
47	<b>Lanzarote</b> (ACE)	440,212	7.8%	4,253	7.7%	430	-1.1%
48	<b>Venice</b> (VCE)	434,556	5.0%	5,516	-7.0%	1,474	-13.7%
49	<b>Milan/Orio al Serio</b> (BGY)	431,232	13.2%	5,069	18.3%	10,874	0.4%
50	<b>Valencia</b> (VLC)	391,410	10.9%	6,569	8.0%	1,124	12.5%
51	<b>Liverpool</b> (LPL)	362,816	-1.0%	3,448	-5.7%	261	-13.6%
52	<b>Bucharest</b> (OTP)	360,875	29.8%	5,380	19.2%	1,174	7.8%
53	<b>Naples</b> (NAP)	349,581	10.8%	4,445	1.4%	104	-21.0%

Airports		Passengers		Commercial movements		Freight (metric tonnes)	
		January 2008	2008v 2007 variation %	January 2008	2008v 2007 variation %	January 2008	2008v 2007 variation %
54	<b>Nottingham East Midlands (EMA)</b>	343,516	16.0%	5,325	14.1%	22,773	3.4%
55	<b>Bergen (BGO)</b>	342,492	6.4%	5,976	3.6%	211	-21.5%
56	<b>Rome-Ciampino(CIA)</b>	342,306	-7.9%	2,961	-16.3%	1,669	-20.1%
57	<b>Fuerteventura (FUE)</b>	342,184	1.6%	3,319	0.8%	234	1.1%
58	<b>Girona (GRO)</b>	333,101	47.7%	3,183	70.8%	26	10.8%
59	<b>Hanover (HAJ)</b>	329,077	4.2%	5,049	7.5%	510	82.8%
60	<b>Goteborg (GOT)</b>	325,976	4.5%	4,960	2.2%	4,131	-12.0%
61	<b>Nuremberg (NUE)</b>	324,739	7.6%	4,929	-0.6%	1,028	5.1%
62	<b>Sevilla (SVQ)</b>	308,111	11.6%	4,414	18.7%	559	-5.7%
63	<b>Porto (OPO)</b>	304,195	17.5%	4,383	8.9%	2,512	-8.9%
64	<b>Tenerife Norte (TFN)</b>	302,192	1.9%	4,798	-1.0%	1,623	-11.9%
65	<b>Bologna (BLQ)</b>	292,421	2.5%	4,664	0.7%	1,601	35.0%
66	<b>Turin (TRN)</b>	289,438	3.6%	4,064	1.2%	72	-31.4%
67	<b>Bilbao (BIO)</b>	278,294	11.8%	4,185	4.9%	240	-15.3%
68	<b>Stavanger (SVG)</b>	264,794	9.3%	4,538	11.1%	234	-19.2%
69	<b>Trondheim (TRD)</b>	255,736	5.1%	3,998	7.4%	200	4.3%
70	<b>Basel-Mulhouse (BSL/ML)</b>	248,355	-7.2%	4,242	-0.5%	2,975	-10.9%
71	<b>Bordeaux (BOD)</b>	234,440	2.6%	3,912	3.8%	612	12.8%
72	<b>Riga (RIX)</b>	232,764	21.1%	3,798	19.8%	326	-25.1%
73	<b>Aberdeen (ABZ)</b>	232,100	-4.7%	8,111	-5.5%	323	-1.5%
74	<b>Sofia (SOF)</b>	229,594	9.8%	3,039	3.5%	1,012	-1.7%
75	<b>Hahn (HHN)</b>	225,726	-16.2%	2,721	-6.0%	8,163	39.5%
76	<b>Madeira (FNC)</b>	174,808	2.9%	1,795	-0.2%	491	-4.1%
77	<b>Bari (BRI)</b>	168,240	10.1%	2,421	18.6%	137	22.6%
78	<b>Faro (FAO)</b>	165,572	-7.9%	1,555	-13.0%	33	-52.9%
79	<b>Malta (MLA)</b>	157,219	23.4%	1,758	14.7%	1,443	26.8%

Airports		Passengers		Commercial movements		Freight (metric tones)	
		January 2008	2008v 2007 variation %	January 2008	2008v 2007 variation %	January 2008	2008v 2007 variation %
80	<b>Stockholm-Bromma (BMA)</b>	143,245	8.9%	2,761	3.0%	28	211.1%
81	<b>Vilnius (VNO)</b>	129,852	30.7%	2,795	31.1%	324	-0.6%
82	<b>Malmo (MMX)</b>	126,757	-7.7%	1,982	-8.7%	2,301	-30.5%
83	<b>Florence (FLR)</b>	125,974	1.3%	2,027	2.7%	6	11.1%
84	<b>Tromsoe (TOS)</b>	120,476	4.6%	2,653	2.0%	173	-6.7%
85	<b>Southampton (SOU)</b>	118,900	-3.1%	3,196	-12.2%	34	78.9%
86	<b>Bodoe (BOO)</b>	108,088	2.4%	3,051	-1.4%	130	0.0%
87	<b>Strasbourg (SXB)</b>	101,308	-31.3%	2,859	-10.8%	35	-28.6%
88	<b>Ljubljana (LJU)</b>	95,767	17.0%	2,563	4.4%	762	-17.4%
89	<b>Ibiza (IBZ)</b>	93,731	0.0%	1,714	-3.7%	229	-1.5%
90	<b>Bournemouth (BOH)</b>	66,420	-3.5%	969	-9.8%	1	-99.3%
91	<b>Menorca (MAH)</b>	64,897	1.7%	1,336	-0.1%	205	-4.4%
92	<b>Brindisi (BDS)</b>	63,407	16.7%	859	36.1%	4	-62.3%
93	<b>Kristiansand (KRS)</b>	62,027	4.7%	1,503	1.1%	42	-11.2%
94	<b>Aalesund (AES)</b>	54,819	3.1%	850	6.0%	89	-0.7%
95	<b>Skopje (SKP)</b>	42,781	1.2%	738	-8.3%	150	33.1%
96	<b>Haugesund (HAU)</b>	39,014	-1.5%	730	4.7%	23	-51.8%
97	<b>Humberside (HUY)</b>	23,909	-3.4%	984	0.4%	354	-5.5%
98	<b>Liege (LGG)</b>	8,939	21.9%	2,225	8.6%	46,830	24.2%
99	<b>Ohrid (OHD)</b>	3,511	6.8%	50	-15.3%	2	422.2%
100	<b>Warsaw (WAW)</b>	N/A	N/A	N/A	N/A	N/A	N/A
101	<b>Charleroi (CRL)</b>	N/A	N/A	N/A	N/A	N/A	N/A
102	<b>Tallinn (TLL)</b>	N/A	N/A	N/A	N/A	N/A	N/A
103	<b>Katowice (KTW)</b>	N/A	N/A	N/A	N/A	N/A	N/A
104	<b>Olbia (OLB)</b>	N/A	N/A	N/A	N/A	N/A	N/A
105	<b>Dubrovnik (DBV)</b>	N/A	N/A	N/A	N/A	N/A	N/A
106	<b>Glasgow Prestwick (PIK)</b>	N/A	N/A	N/A	N/A	N/A	N/A

----- Preliminary traffic figures -----

### **Total commercial passengers**

**International passengers** (enplaned + deplaned) + **domestic passengers** (enplaned + deplaned) + **direct transit passengers** (passengers who arrive at and depart from the airport on a flight bearing the same number. They are counted only ONCE).

### **Commercial movements**

Landing or take off of an aircraft operating a scheduled or non scheduled commercial service.

### **Freight**

Freight loaded and unloaded (arriving or departing) at the airport. Freight comprises goods, newspapers, diplomatic bags, parcel post and express parcel.

**The ten largest airports on freight – reporting to  
ACI EUROPE**  
(metric tonnes)

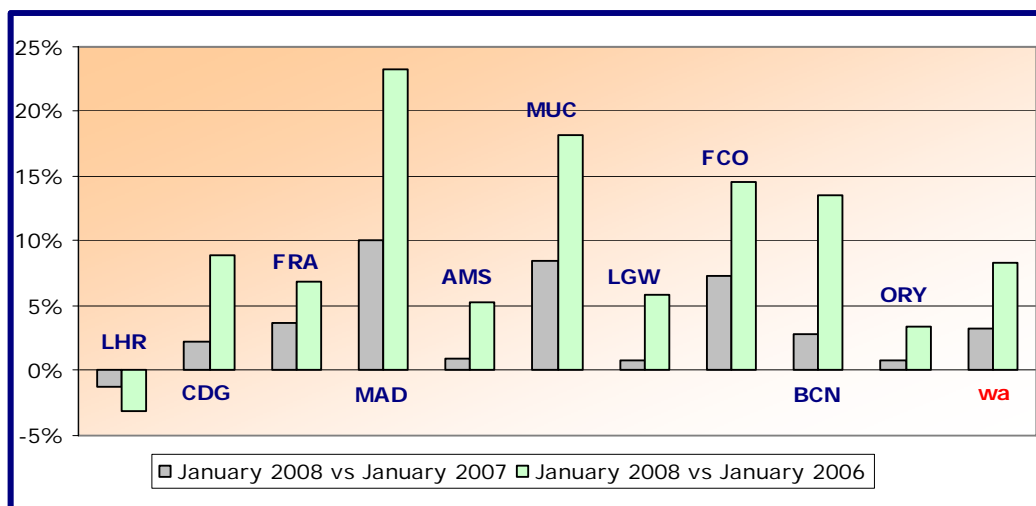
Airports		January 2008	2008v2007 variation %
1	Frankfurt (FRA)	154,337	4.4%
2	Amsterdam (AMS)	124,926	7.9%
3	London Heathrow (LHR)	105,475	10.3%
4	Brussels (BRU)	62,241	15.5%
5	Liege (LGG)	46,830	24.2%
6	Cologne/Bonn (CGN)	46,319	-19.0%
7	Milan-Malpensa (MXP)	35,481	10.1%
8	Madrid (MAD)	25,675	1.3%
9	Nottingham East Midlands (EMA)	22,773	3.4%
10	Zurich (ZRH)	21,079	5.6%

**Group 1**

**Airports welcoming more than 25 million passengers per year  
(percentage traffic variation January 2008 versus 2007 and 2006)**

Airport	2008v2007 variation %	2008v2006 variation %
LHR	-1.3%	-3.2%
CDG	+2.3%	+8.9%
FRA	+3.7%	+6.8%
MAD	+10.0%	+23.2%
AMS	+0.9%	+5.3%
MUC	+8.5%	+18.1%
LGW	+0.8%	+5.8%
FCO	+7.2%	+14.5%
BCN	+2.8%	+13.5%
ORY	+0.7%	+3.4%
<b>wa*</b>	<b>+3.2%</b>	<b>+8.4%</b>

\*weighted average =  $\text{SUM}(\% \text{change} * \text{pax}) / \text{SUM}(\text{pax})$

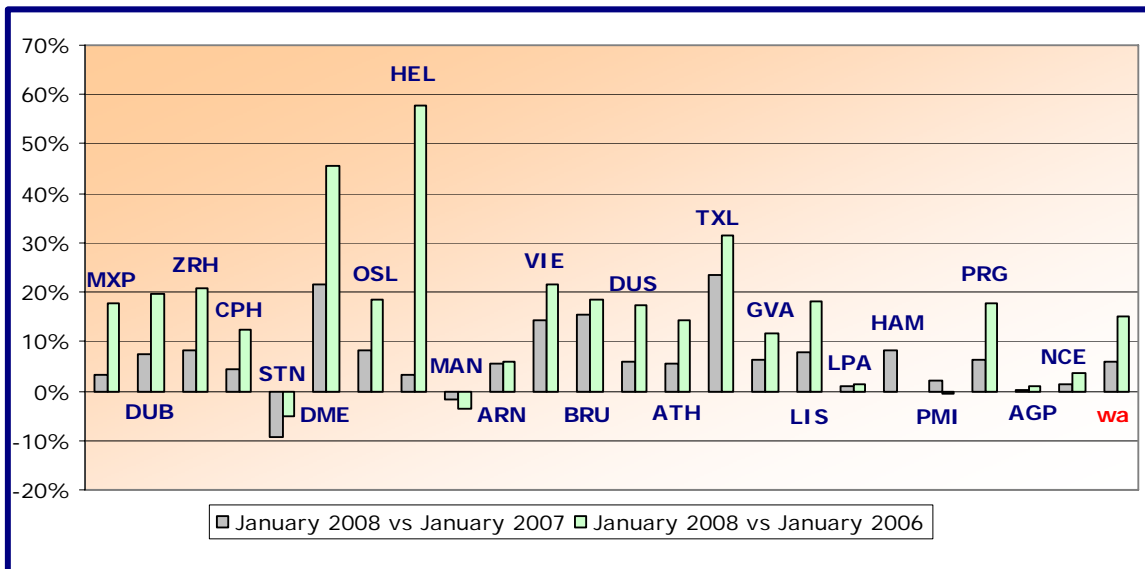




**Group 2**  
**Airports welcoming between 10 and 25 million passengers**  
**per year (percentage traffic variation January 2008 versus 2007 and 2006)**

Airport	2008v2007 variation %	2008v2006 variation %
MXP	+3.3%	+17.6%
DUB	+7.5%	+19.7%
ZRH	+8.4%	+20.9%
CPH	+4.4%	+12.6%
STN	-9.3%	-5.1%
DME	+21.5%	+45.7%
OSL	+8.3%	+18.6%
HEL	+3.2%	+57.6%
MAN	-1.9%	-3.5%
ARN	+5.7%	+6.0%
VIE	+14.5%	+21.4%
BRU	+15.7%	+18.4%
DUS	+5.9%	+17.2%
ATH	+5.4%	+14.5%
TXL	+23.3%	+31.6%
GVA	+6.2%	+11.8%
LIS	+7.8%	+18.1%
LPA	+0.8%	+1.4%
HAM	+8.4%	N/A
PMI	+2.2%	-0.7%
PRG	+6.3%	+17.9%
AGP	+0.3%	+0.8%
NCE	+1.4%	+3.5%
<b>wa*</b>	<b>+6.1%</b>	<b>+15.0%</b>

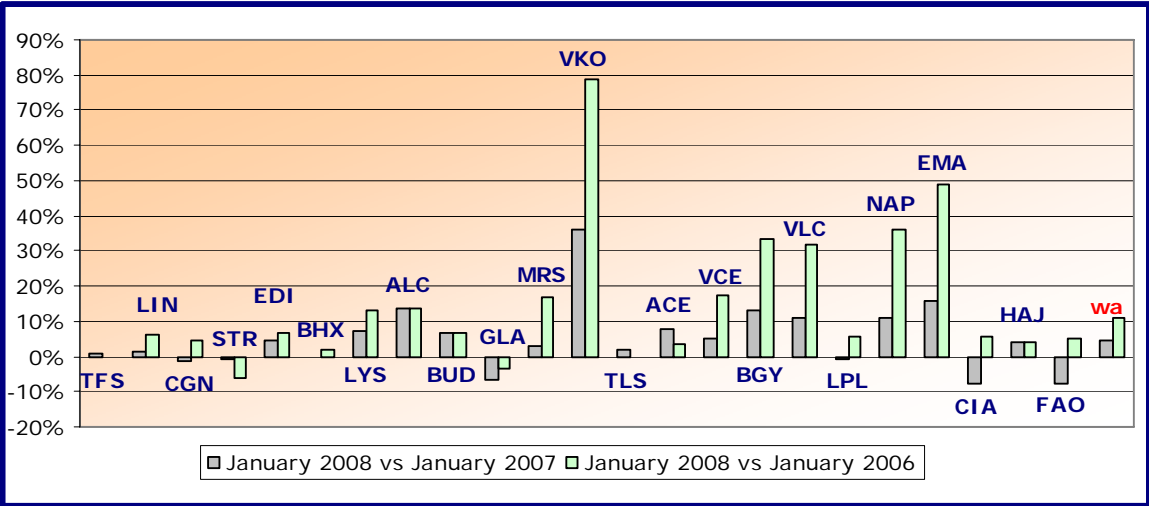
\*weighted average=SUM(%change\*pax)/SUM(pax)



**Group 3**  
**Airports welcoming between 5 and 10 million passengers**  
**per year (percentage traffic variation January 2008 versus 2007 and 2006)**

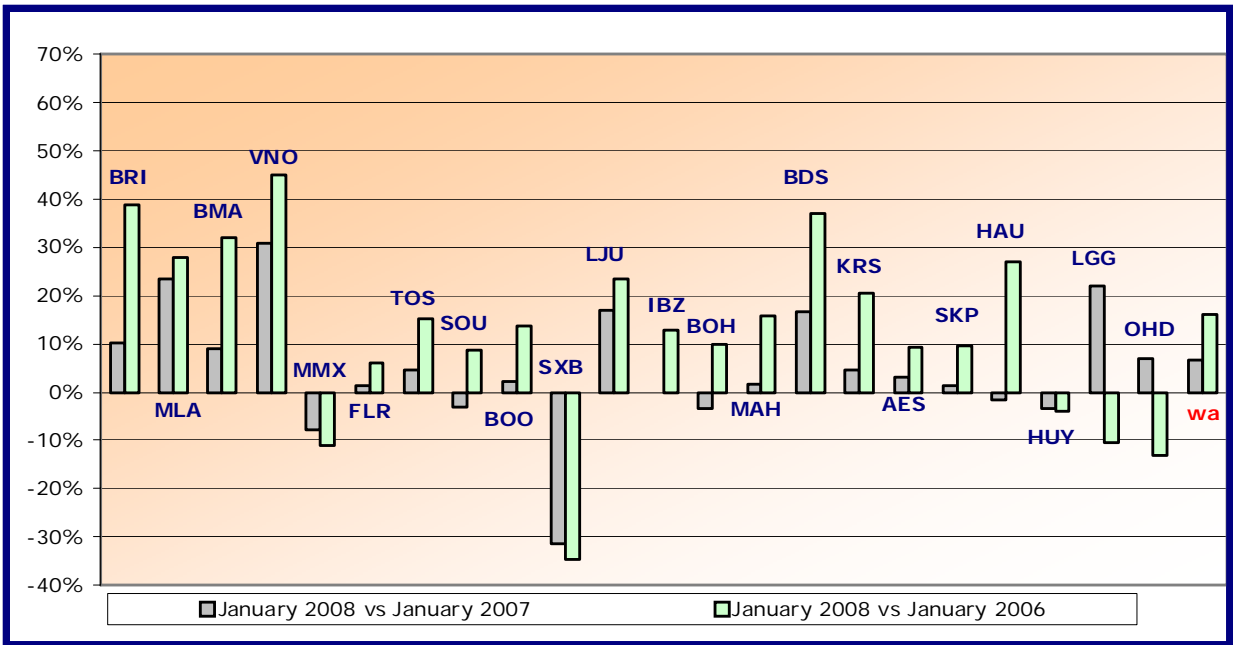
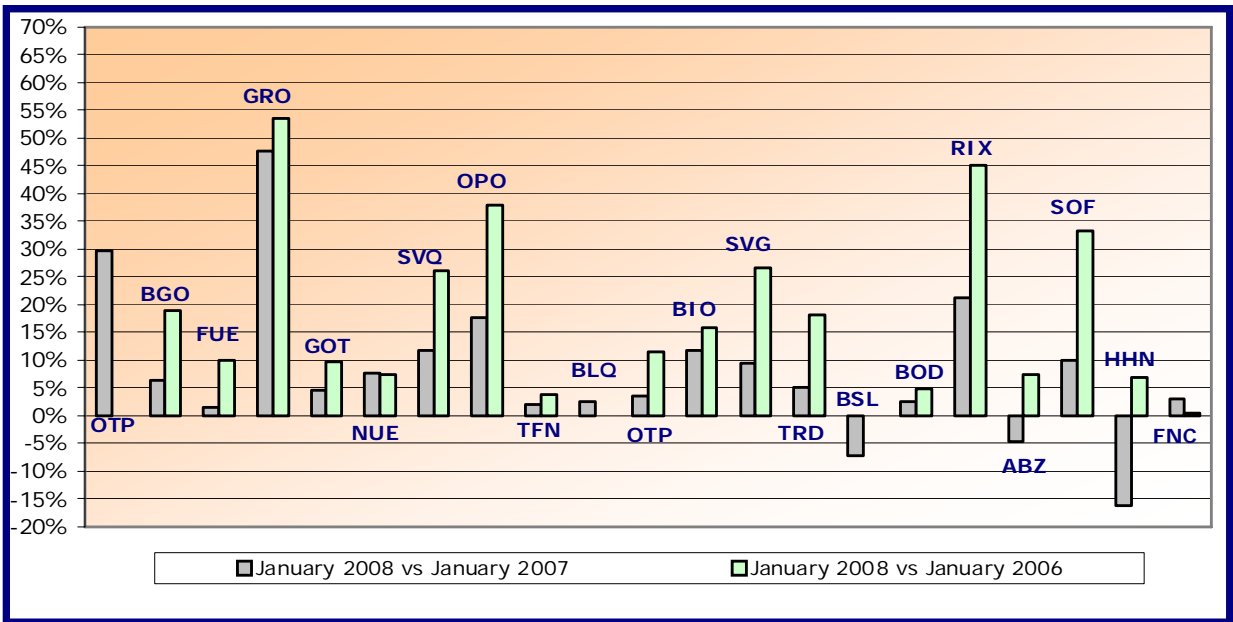
Airport	2008v2007 variation %	2008v2006 variation %
TFS	+0.9%	-0.2%
LIN	+1.2%	+6.0%
CGN	-1.2%	+4.4%
STR	-1.0%	-6.0%
EDI	+4.5%	+7.0%
BHX	-0.1%	+2.0%
LYS	+7.2%	+12.8%
ALC	+13.4%	+13.8%
BUD	+6.6%	+6.6%
GLA	-6.5%	-3.4%
MRS	+3.1%	+16.9%
VKO	+36.1%	+78.6%
TLS	+2.1%	N/A
ACE	+7.8%	+3.5%
VCE	+5.0%	+17.1%
BGY	+13.2%	+33.5%
VLC	+10.9%	+32.0%
LPL	-1.0%	+5.5%
NAP	+10.8%	+36.2%
EMA	+16.0%	+48.7%
CIA	-7.9%	+5.6%
HAJ	+4.2%	+4.2%
FAO	-7.9%	+5.1%
<b>wa*</b>	<b>+4.4%</b>	<b>+10.9%</b>

\*weighted average=SUM(%change\*pax)/SUM(pax)



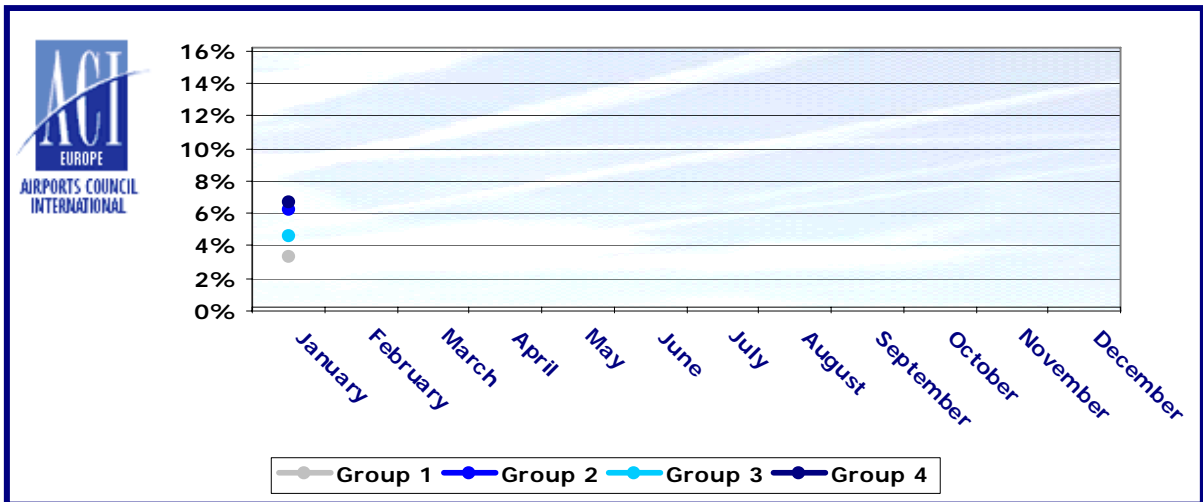
Group 4		
Airports welcoming less than 5 million passengers		
per year (percentage traffic variation January 2008 versus 2007 and 2006)		
Airport	2008v2007 variation %	2008v2006 variation %
OTP	+29.8%	N/A
BGO	+6.4%	+18.9%
FUE	+1.6%	+10.0%
GRO	+47.7%	+53.5%
GOT	+4.5%	+9.6%
NUE	+7.6%	+7.4%
SVQ	+11.6%	+26.0%
OPO	+17.5%	+37.9%
TFN	+1.9%	+3.7%
BLQ	+2.5%	N/A
TRN	+3.6%	+11.4%
BIO	+11.8%	+16.0%
SVG	+9.3%	+26.6%
TRD	+5.1%	+18.1%
BSL/ML	-7.2%	N/A
BOD	+2.6%	+4.7%
RIX	+21.1%	+45.1%
ABZ	-4.7%	+7.3%
SOF	+9.8%	+33.3%
HHN	-16.2%	+6.8%
FNC	+2.9%	+0.4%
BRI	+10.1%	+38.7%
MLA	+23.4%	+27.9%
BMA	+8.9%	+32.0%
VNO	+30.7%	+44.9%
MMX	-7.7%	-11.1%
FLR	+1.3%	+6.0%
TOS	+4.6%	+15.1%
SOU	-3.1%	+8.7%
BOO	+2.4%	+13.8%
SXB	-31.3%	-34.6%
LJU	+17.0%	+23.6%
IBZ	+0.0%	+12.9%
BOH	-3.5%	+9.8%
MAH	+1.7%	+15.9%
BDS	+16.7%	+37.0%
KRS	+4.7%	+20.6%
AES	+3.1%	+9.2%
SKP	+1.2%	+9.6%
HAU	-1.5%	+26.9%
HUY	-3.4%	-3.8%
LGG	+21.9%	-10.5%
OHD	+6.8%	-13.1%
<b>wa*</b>	<b>+6.5%</b>	<b>+16.2%</b>

\*weighted average=SUM(%change\*pax)/SUM(pax)



## Year-to-date airport passenger trends

The graphic illustrates and compares the trends of the different airport Groups 1, 2, 3 and 4 for 2008.



The graphic compares the amount of total commercial passengers 2008 with 2007. The airports included, in this graphic, are: LHR, FRA, CDG, AMS, MAD, LGW, FCO, MUC, BCN, ORY, STN, MAN, MXP, ZRH, CPH, ARN, DUB, OSL, BRU, VIE, DUS, ATH, PMI, AGP, DME, HEL, TXL, LIS, HAM, PRG.

