



Airport Traffic Report

July 2008

European passenger traffic down -0.4% during July 2008

The '**ACI EUROPE Airport Traffic Report - July 2008**' includes **108 airports** in total. St Petersburg (LED) is the latest airport to be included in the report.

The overall **passenger** traffic at European airports decreased by **-0.4%** in **July 2008** compared with July 2007. The overall **freight** traffic among European airports decreased **-2.9%** in July 2008 when compared with the corresponding month in 2007. The overall figure for **movements** at European airports decreased **-0.1%** in July 2008 when compared with July 2007.

Passenger figures for July 2008 indicate that Group 3 airports (airports welcoming between 5 and 10 million passengers per year) had the largest increase in traffic - with an average increase of **+1.2%** when compared with July 2007 - and an average increase of **+5.9%** when compared with July 2006.

Airports welcoming more than 25 million passengers per year (Group 1), airports welcoming between 10 and 25 million passengers (Group 2) and airports welcoming less than 5 million passengers (Group 4) reported an average increase / decrease of **-1.0%**, **-0.9%** and **+1.0%** respectively when compared with July 2007. The same comparison of July 2008 with July 2006 demonstrates an average increase of **+5.4%**, **+5.5%** and **+11.6%** respectively.

Examples of airports that experienced the highest increase in passenger traffic per group, when comparing July 2008 with July 2007, include:

- **Group 1 airports** – Rome Fiumicino (**+10.0%**) and Paris Charles de Gaulle (**0.8%**);
- **Group 2 airports** – Moscow- Domodedovo (**+8.9%**), Berlin Tegel (**+7.9%**), Zurich (**+6.8%**) and Prague (**+4.3%**);
- **Group 3 airports** – Marseille (**+12.0%**), Milan/Orio al Serio (**+11.6%**), Birmingham (**+7.5%**) and Lyon (**+6.8%**);
- **Group 4 airports** – Katowice (**+27.2%**), Vilnius (**+26.2%**), Riga (**+21.9%**) and Haugesund (**+19.8%**).

Airports		Passengers				Commercial movements		Freight (metric tonnes)	
		July 2008	2008v 2007 variation %	January – July	2008v 2007 variation %	July 2008	2008v 2007 variation %	July 2008	2008v 2007 variation %
1	London Heathrow (LHR)	6,430,500	-0.2%	38,966,900	-0.5%	41,515	1.1%	123,996	10.8%
2	Paris Roissy (CDG)	5,962,800	0.8%	35,556,700	3.2%	49,842	2.3%	N/A	N/A
3	Frankfurt (FRA)	5,066,500	-2.4%	31,329,300	1.4%	41,702	-2.3%	170,863	-1.0%
4	Madrid (MAD)	4,901,300	-2.7%	30,606,600	3.6%	41,496	-2.1%	29,147	7.2%
5	Amsterdam (AMS)	4,849,600	-1.5%	27,687,600	1.4%	39,759	-1.7%	129,296	-3.1%
6	London Gatwick (LGW)	3,721,600	-1.8%	20,123,500	1.2%	25,529	1.6%	7,435	-47.1%
7	Rome-Fiumicino (FCO)	3,636,400	10.0%	20,529,200	10.6%	32,475	7.2%	13,882	8.0%
8	Munich (MUC)	3,174,200	-0.1%	20,179,100	5.0%	35,769	-1.7%	20,862	-2.7%
9	Palma de Mallorca (PMI)	3,125,800	-1.9%	12,964,200	0.1%	23,384	-1.6%	2,110	-9.3%
10	Barcelona (BCN)	3,050,200	-8.6%	18,150,100	-3.1%	29,397	-7.3%	9,463	16.7%
11	Paris Orly (ORY)	2,537,400	-3.3%	15,602,300	0.1%	20,879	-0.3%	N/A	N/A
12	Dublin (DUB)	2,431,100	-0.5%	13,829,500	4.1%	18,503	0.7%	N/A	N/A
13	London Stansted (STN)	2,316,900	-5.3%	13,108,600	-4.8%	16,712	-6.7%	17,093	-5.3%
14	Moscow-Domodedovo (DME)	2,301,700	8.9%	11,955,800	19.5%	20,014	12.3%	11,232	21.7%
15	Manchester (MAN)	2,292,300	-4.5%	12,450,500	-1.6%	18,452	-7.8%	12,011	-20.7%
16	Zurich (ZRH)	2,146,200	6.8%	12,720,700	8.9%	20,851	4.6%	24,361	10.1%
17	Copenhagen (CPH)	2,133,400	0.3%	12,878,900	4.4%	22,461	2.7%	N/A	N/A
18	Brussels (BRU)	1,952,100	3.0%	10,952,200	9.1%	21,304	-2.6%	41,623	-31.1%
19	Vienna (VIE)	1,926,300	3.8%	11,584,700	11.2%	23,689	3.6%	15,271	-2.4%
20	Düsseldorf (DUS)	1,838,500	-0.8%	10,471,300	4.4%	19,240	2.3%	6,849	29.3%
21	Athens (ATH)	1,808,100	-2.3%	9,377,100	1.1%	17,220	-5.3%	9,933	3.2%
22	Milan-Malpensa (MXP)	1,780,500	-24.8%	11,647,400	-14.2%	18,618	-23.3%	35,325	-16.2%
23	Oslo (OSL)	1,752,800	4.4%	11,477,600	6.5%	17,312	6.6%	4,951	1.7%
24	Stockholm-Arlanda (ARN)	1,479,300	2.8%	10,802,800	5.6%	14,767	5.4%	7,634	-6.8%
25	Malaga (AGP)	1,437,700	-5.4%	7,533,900	-2.5%	11,616	-7.8%	451	-11.3%
26	Lisbon (LIS)	1,405,600	0.9	7,797,600	4.1%	13,102	1.4	7,855	11.9

Airports		Passengers				Commercial movements		Freight (metric tones)	
		July 2008	2008v 2007 variation %	January – July	2008v 2007 variation %	July 2008	2008v 2007 variation %	July 2008	2008v 2007 variation %
27	Prague (PRG)	1,351,700	4.3%	7,285,300	5.9%	16,733	5.3%	3,568	-5.9%
28	Helsinki (HEL)	1,336,000	1.1%	8,288,900	2.4%	12,941	1.5%	10,386	-7.8%
29	Berlin (TXL)	1,261,500	7.9%	8,315,400	14.3%	13,448	9.7%	1,442	9.5%
30	Hamburg (HAM)	1,218,100	0.7%	7,476,800	4.7%	N/A	N/A	2,803	-10.9%
31	Nice (NCE)	1,156,000	-1.7%	6,127,200	1.8%	13,740	-1.2%	656	-11.2%
32	Cologne/Bonn (CGN)	1,094,900	4.3%	5,965,800	0.6%	12,398	-2.4%	49,875	-19.4%
33	Alicante (ALC)	1,050,300	4.0%	5,610,200	10.1%	7,999	-0.3%	363	-7.9%
34	Birmingham (BHX)	1,036,100	7.5%	5,505,700	5.7%	9,811	1.1%	1,224	-5.8%
35	Geneva (GVA)	1,035,400	3.1%	7,091,500	8.7%	11,225	2.7%	2,655	2.0%
36	Warsaw (WAW)	1,018,700	5.7%	5,566,400	7.9%	12,349	2.2%	3,119	1.5%
37	Stuttgart (STR)	985,000	-2.4%	5,699,200	-1.6%	11,606	-2.8%	1,974	12.4%
38	Glasgow (GLA)	943,200	-3.4%	4,794,900	-4.5%	8,626	-3.6%	315	-18.0%
39	Milan Linate (LIN)	915,200	-5.2%	5,768,800	-1.2%	8,907	-1.7%	1,588	-0.3%
40	Budapest (BUD)	905,600	-3.5%	4,820,000	0.7%	10,489	-6.9%	5,226	-3.8%
41	Edinburgh (EDI)	905,500	-1.3%	5,256,700	1.8%	10,610	2.3%	753	-49.2%
42	Moscow- Vnukovo (VKO)	856,200	12.0%	4,539,200	28.0%	13,474	13.6%	2,125	28.7%
43	St Petersburg (LED)	850,800	13.6%	4,063,500	23.3%	9,650	5.4%	2,191	0.1%
44	Ibiza (IBZ)	829,400	-4.3%	2,481,900	-1.0%	8,074	-3.4%	470	-10.9%
45	Gran Canaria (LPA)	818,300	-2.9%	5,993,700	1.6%	8,968	0.5%	2,852	-0.5%
46	Lyon (LYS)	765,800	6.8%	4,667,800	9.1%	11,237	0.0%	2,894	-6.6%
47	Faro (FAO)	733,900	1.4%	3,111,400	0.2%	4,994	0.7%	68	-37.0%
48	Marseille (MRS)	724,500	-1.1%	4,044,800	1.0%	9,292	1.4%	3,953	15.6%
49	Venice (VCE)	704,600	-6.0%	4,024,400	0.5%	7,087	-10.8%	3,354	61.1%
50	Berlin (SXF)	661,100	6.4%	3,694,900	1.8%	5,260	4.1%	304	6.9%
51	Milan/Orio al Serio (BGY)	638,800	11.6%	3,771,200	14.7%	5,493	4.3%	11,212	-2.8%
52	Tenerife Sur (TFS)	636,700	-8.2%	4,925,200	0.9%	4,439	-9.7%	646	-15.1%
53	Hanover (HAJ)	610,600	1.2%	3,235,300	2.5%	6,645	-1.5%	792	-19.5%

Airports		Passengers				Commercial movements		Freight (metric tonnes)	
		July 2008	2008v 2007 variation %	January – July	2008v 2007 variation %	July 2008	2008v 2007 variation %	July 2008	2008v 2007 variation %
54	Valencia (VLC)	589,300	0.6%	3,492,400	4.5%	7,438	2.4%	1,076	-5.3%
55	Girona (GRO)	587,800	12.0%	3,240,200	22.9%	4,042	8.4%	12	-62.0%
56	Naples (NAP)	586,400	-2.7%	3,312,300	3.9%	5,896	-3.8%	111	-29.5%
57	Nottingham East Midlands (EMA)	584,600	1.7%	3,333,900	9.0%	6,583	10.5%	22,508	0.9%
58	Toulouse (TLS)	570,800	0.9%	3,773,600	3.7%	7,131	3.4%	2,982	-12.4%
59	Liverpool (LPL)	531,900	-2.1%	2,684,700	0.2%	4,065	-3.1%	440	11.4%
60	Lanzarote (ACE)	513,500	-3.9%	3,225,300	2.4%	4,606	-1.8%	444	-4.3%
61	Bucharest (OTP)	504,000	-19.6%	N/A	N/A	6,336	-15.3%	2,037	74.2%
62	Porto (OPO)	469,500	10.5%	2,595,000	18.6%	5,174	9.8%	2,983	2.8%
63	Rome- Ciampino (CIA)	443,100	-11.9%	2,781,700	-12.9%	3,019	-16.1%	1,845	-8.2%
64	Menorca (MAH)	441,300	-7.5%	1,415,400	-5.1%	4,154	-5.3%	383	-8.3%
65	Basel-Mulhouse (BSL/ML)	439,900	1.6%	2,490,800	2.1%	5,193	0.9%	3,295	-12.9%
66	Bologna (BLQ)	429,100	-7.2%	N/A	N/A	5,445	-9.9%	2,567	51.1%
67	Hahn (HHN)	425,800	3.5%	2,250,200	-4.2%	3,722	2.1%	10,026	10.8%
68	Bilbao (BIO)	419,200	-5.5%	2,525,100	4.3%	4,773	-6.4%	289	2.7%
69	Verona (VRN)	418,400	-8.8%	2,049,400	2.8%	3,900	-9.3%	601	-22.9%
70	Fuerteventura (FUE)	418,300	-4.3%	2,585,800	0.3%	3,902	1.7%	228	-13.2%
71	Bergen (BGO)	408,600	8.8%	2,733,600	4.6%	5,547	2.6%	272	7.5%
72	Tenerife Norte (TFN)	406,400	10.2%	2,463,100	3.7%	5,607	10.4%	1,842	-12.2%
73	Sevilla (SVQ)	404,400	-5.2%	2,672,800	5.0%	4,311	-3.8%	416	-35.7%
74	Riga (RIX)	390,800	21.9%	2,050,000	18.3%	5,237	23.8%	458	1.6%
75	Malta (MLA)	372,200	1.3%	N/A	N/A	3,029	-3.3%	1,436	-5.0%
76	Goteborg (GOT)	364,300	2.9%	2,562,600	3.1%	4,584	4.7%	3,657	-6.8%
77	Bordeaux (BOD)	363,700	4.1%	2,107,000	4.2%	5,282	12.5%	921	34.3%
78	Nuremberg (NUE)	348,600	-4.5%	2,478,600	3.6%	4,983	-9.0%	772	-24.8%
79	Aberdeen (ABZ)	317,200	-2.6%	1,935,300	-1.7%	9,217	1.0%	364	15.6%
80	Turin (TRN)	306,400	-4.8%	2,135,500	2.6%	4,173	-7.1%	122	43.5%

Airports		Passengers				Commercial movements		Freight (metric tones)	
		July 2008	2008v 2007 variation %	January – July	2008v 2007 variation %	July 2008	2008v 2007 variation %	July 2008	2008v 2007 variation %
81	Katowice (KTW)	301,700	27.2%	N/A	N/A	2,622	22.0%	780	18.5%
82	Sofia (SOF)	297,900	17.1%	1,835,600	18.9%	3,845	13.0%	1,554	6.4%
83	Stavanger (SVG)	266,400	3.9%	2,048,000	9.2%	3,607	-7.3%	230	-4.8%
84	Trondheim (TRD)	261,700	1.7%	2,012,900	4.9%	3,472	6.0%	158	-0.3%
85	Bari (BRI)	254,900	6.1%	1,477,000	9.8%	2,665	1.4%	159	41.0%
86	Vilnius (VNO)	222,000	26.2%	1,216,800	30.4%	3,585	33.2%	347	0.5%
87	Madeira (FNC)	221,700	-3.1%	N/A	N/A	2,051	5.6%	621	4.6%
88	Ljubljana (LJU)	204,300	10.2%	939,000	14.8%	3,616	10.4%	762	-35.9%
89	Southampton (SOU)	192,200	-1.8%	1,149,200	3.5%	4,215	-5.2%	22	4.8%
90	Dubrovnik (DBV)	191,800	1.6%	649,900	7.1%	1,688	0.5%	69	-51.0%
91	Florence (FLR)	185,800	1.5%	1,150,800	5.0%	2,798	10.9%	9	55.4%
92	Tallinn (TLL)	172,800	7.5%	1,072,800	11.0%	2,985	15.2%	3,359	229.2%
93	Tromsøe (TOS)	148,900	0.5%	984,800	5.0%	2,640	0.3%	176	3.3%
94	Bodøe (BOO)	139,000	-3.7%	886,100	0.2%	3,205	2.5%	130	0.7%
95	Malmö (MMX)	132,400	-8.5%	1,038,100	-4.4%	1,723	-11.6%	2,689	-25.4%
96	Strasbourg (SXB)	127,600	-14.1%	801,800	-27.6%	2,990	0.5%	33	-2.9%
97	Brindisi (BDS)	119,900	9.1%	577,200	10.3%	1,145	15.3%	17	37.9%
98	Stockholm- Bromma (BMA)	92,500	3.2%	N/A	N/A	1,853	8.6%	24	33.3%
99	Skopje (SKP)	83,400	5.6%	377,700	7.8%	1,151	5.3%	184	27.4%
100	Liege (LGG)	71,800	8.4%	200,800	9.9%	2,643	3.9%	41,505	9.7%
101	Kristiansand (KRS)	71,000	-3.0%	512,200	2.6%	1,706	-3.0%	36	-14.2%
102	Aalesund (AES)	70,700	10.4%	465,500	6.9%	928	2.7%	78	5.2%
103	Haugesund (HAU)	45,400	19.8%	306,500	6.0%	618	2.3%	21	-10.4%

Airports		Passengers				Commercial movements		Freight (metric tonnes)	
		July 2008	2008v 2007 variation %	January – July	2008v 2007 variation %	July 2008	2008v 2007 variation %	July 2008	2008v 2007 variation %
104	Ohrd (OHD)	8,500	-1.8%	N/A	N/A	122	-0.8%	1	-67.8%
105	Plovdn (PDV)	1,700	46.5%	N/A	N/A	23	27.8%	23	-78.7%
106	Glasgow Prestwick (PIK)	N/A	N/A	N/A	N/A	N/A	N/A	N/A	N/A
107	Bournemouth (BOH)	N/A	N/A	N/A	N/A	N/A	N/A	N/A	N/A
108	Humberside (HUY)	N/A	N/A	N/A	N/A	N/A	N/A	N/A	N/A

----- Preliminary traffic figures -----

Total commercial passengers

International passengers (enplaned + deplaned) + **domestic passengers** (enplaned + deplaned) + **direct transit passengers** (passengers who arrive at and depart from the airport on a flight bearing the same number. They are counted only ONCE).

Commercial movements

Landing or take off of an aircraft operating a scheduled or non scheduled commercial service.

Freight

Freight loaded and unloaded (arriving or departing) at the airport. Freight comprises goods, newspapers, diplomatic bags, parcel post and express parcel.

**The ten largest airports on freight – reporting to
ACI EUROPE**
(metric tonnes)

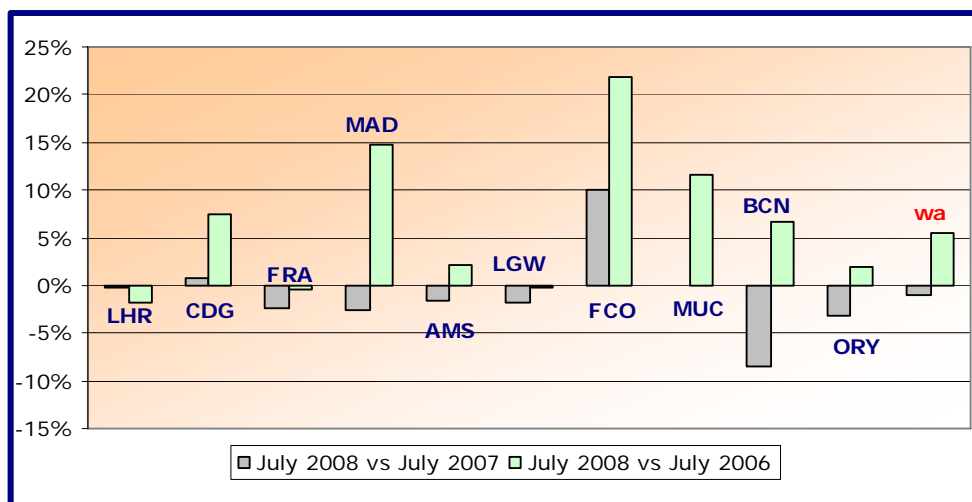
Airports		July 2008	2008v2007 variation %
1	Frankfurt (FRA)	170,863	-1.0%
2	Amsterdam (AMS)	129,296	-3.1%
3	London Heathrow (LHR)	123,996	10.8%
4	Cologne/Bonn (CGN)	49,875	-19.4%
5	Brussels (BRU)	41,623	-31.1%
6	Liege (LGG)	41,505	9.7%
7	Milan-Malpensa (MXP)	35,325	-16.2%
8	Madrid (MAD)	29,147	7.2%
9	Zurich (ZRH)	24,361	10.1%
10	Nottingham East Midlands (EMA)	22,508	0.9%

Group 1

**Airports welcoming more than 25 million passengers per year
(percentage traffic variation July 2008 versus 2007 and 2006)**

Airport	2008v2007 variation %	2008v2006 variation %
LHR	-0.2%	-1.8%
CDG	+0.8%	+7.4%
FRA	-2.4%	-0.4%
MAD	-2.7%	+14.8%
AMS	-1.5%	+2.1%
LGW	-1.8%	-0.2%
FCO	+10.0%	+21.9%
MUC	-0.1%	+11.6%
BCN	-8.6%	+6.7%
ORY	-3.3%	+2.0%
wa*	-1.0%	+5.4%

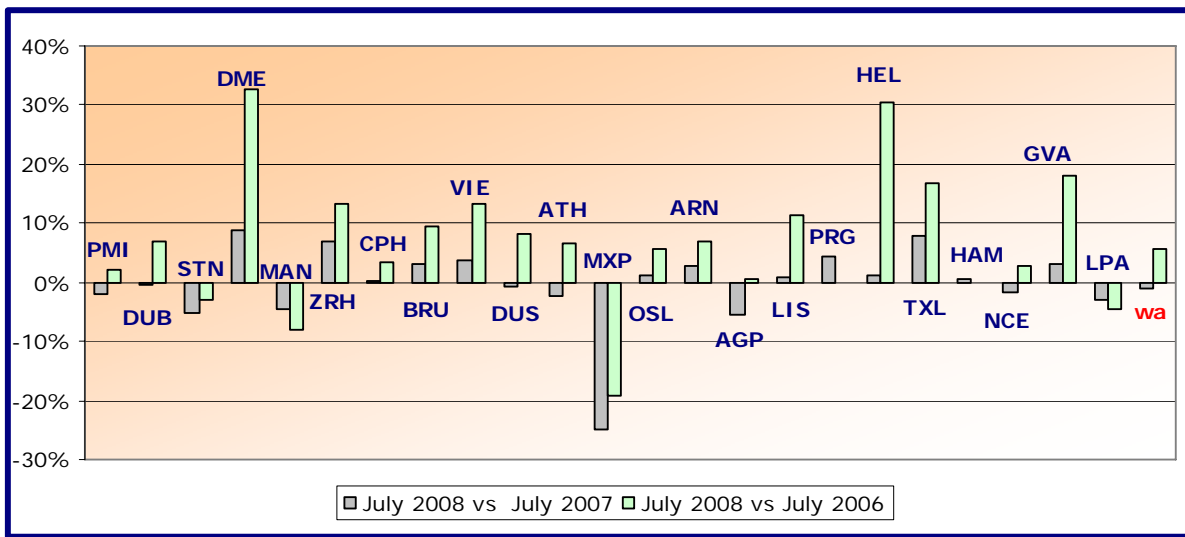
*weighted average = SUM(%change * pax) / SUM(pax)



Group 2
Airports welcoming between 10 and 25 million passengers
per year (percentage traffic variation July 2008 versus 2007 and 2006)

Airport	2008v2007 variation %	2008v2006 variation %
PMI	-1.9%	+2.1%
DUB	-0.5%	+6.8%
STN	-5.3%	-3.1%
DME	+8.9%	+32.8%
MAN	-4.5%	-7.9%
ZRH	+6.8%	+13.3%
CPH	+0.3%	+3.3%
BRU	+3.0%	+9.5%
VIE	+3.8%	+13.2%
DUS	-0.8%	+8.3%
ATH	-2.3%	+6.6%
MXP	-24.8%	-19.2%
OSL	+1.1%	+5.6%
ARN	+2.8%	+6.9%
AGP	-5.4%	+0.6%
LIS	+0.9%	+11.3%
PRG	+4.3%	N/A
HEL	+1.1%	+30.4%
TXL	+7.9%	+16.7%
HAM	+0.7%	N/A
NCE	-1.7%	+2.6%
GVA	+3.1%	+18.1%
LPA	-2.9%	-4.5%
wa*	-0.9%	+5.5%

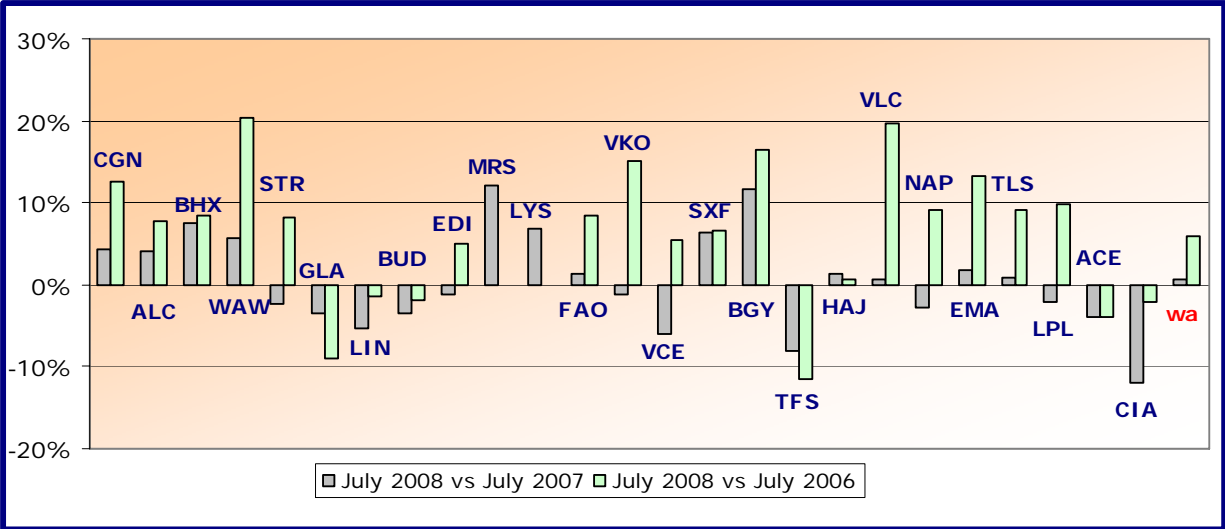
*weighted average=SUM(%change*pax)/SUM(pax)



Group 3
Airports welcoming between 5 and 10 million passengers
per year (percentage traffic variation July 2008 versus 2007 and 2006)

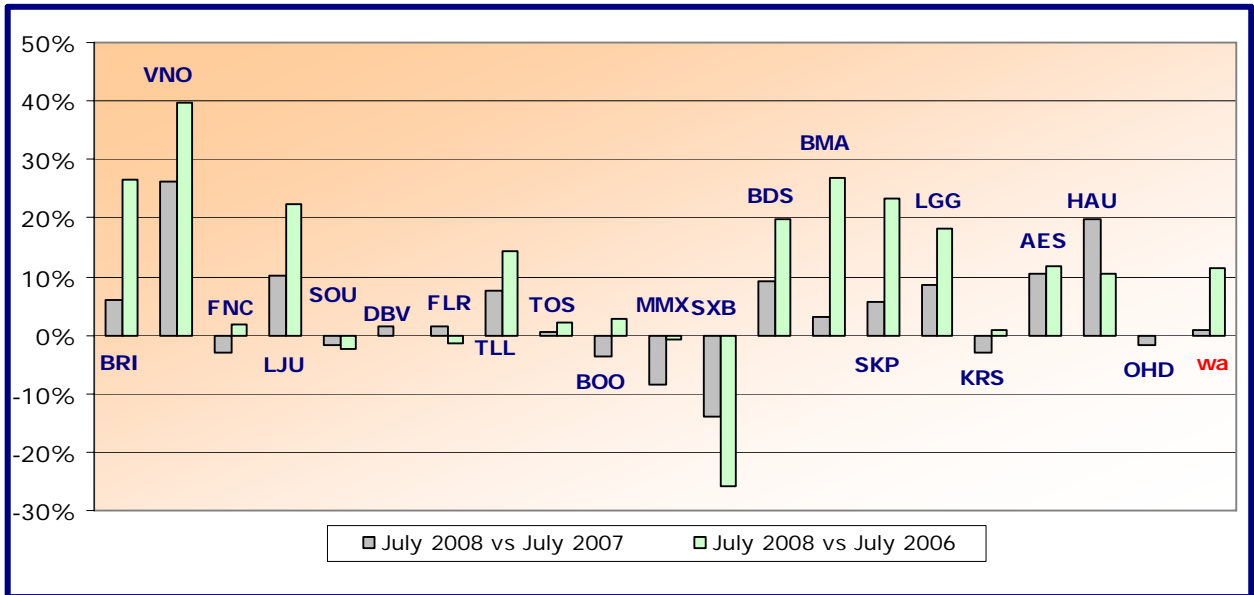
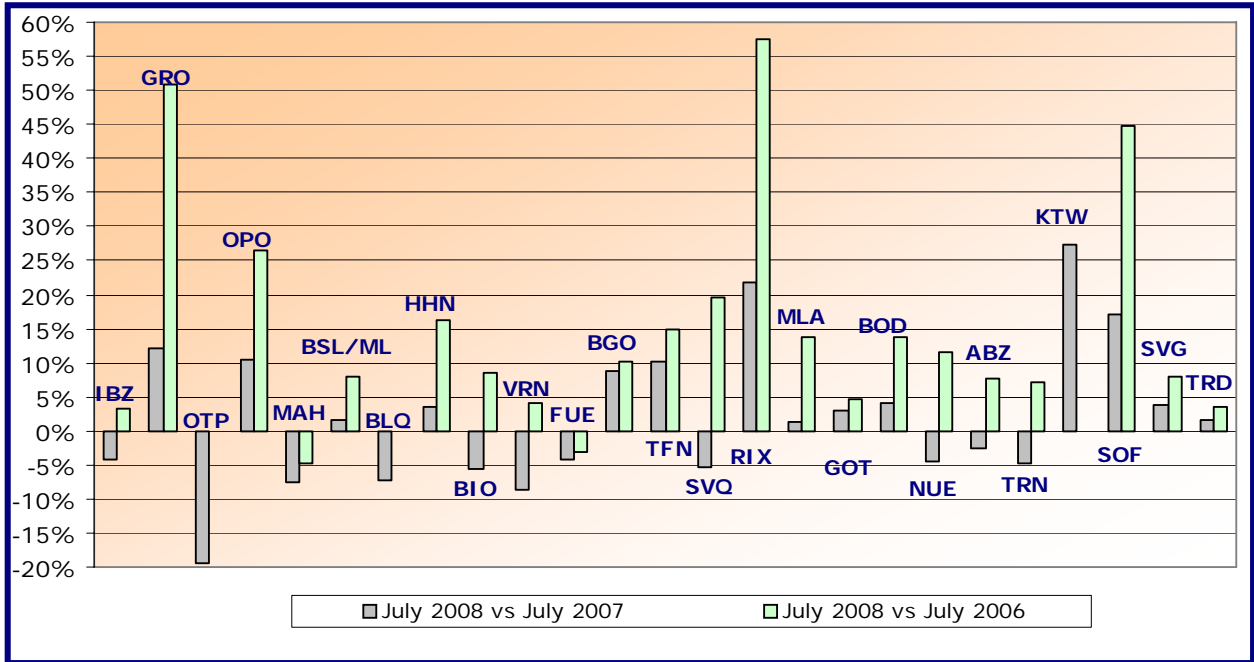
Airport	2008v2007 variation %	2008v2006 variation %
CGN	+4.3%	+12.6%
ALC	+4.0%	+7.6%
BHX	+7.5%	+8.4%
WAW	+5.7%	+20.3%
STR	-2.4%	+8.3%
GLA	-3.4%	-9.1%
LIN	-5.2%	-1.5%
BUD	-3.5%	-1.8%
EDI	-1.3%	+5.0%
MRS	+12.0%	N/A
LYS	+6.8%	N/A
FAO	+1.4%	+8.5%
VKO	-1.1%	+15.1%
VCE	-6.0%	+5.4%
SXF	+6.4%	+6.6%
BGY	+11.6%	+16.6%
TFS	-8.2%	-11.6%
HAJ	+1.2%	+0.6%
VLC	+0.6%	+19.7%
NAP	-2.7%	+9.2%
EMA	+1.7%	+13.3%
TLS	+0.9%	+9.1%
LPL	-2.1%	+9.7%
ACE	-3.9%	-4.0%
CIA	-11.9%	-2.0%
wa*	+1.2%	+5.9%

*weighted average=SUM(%change*pax)/SUM(pax)



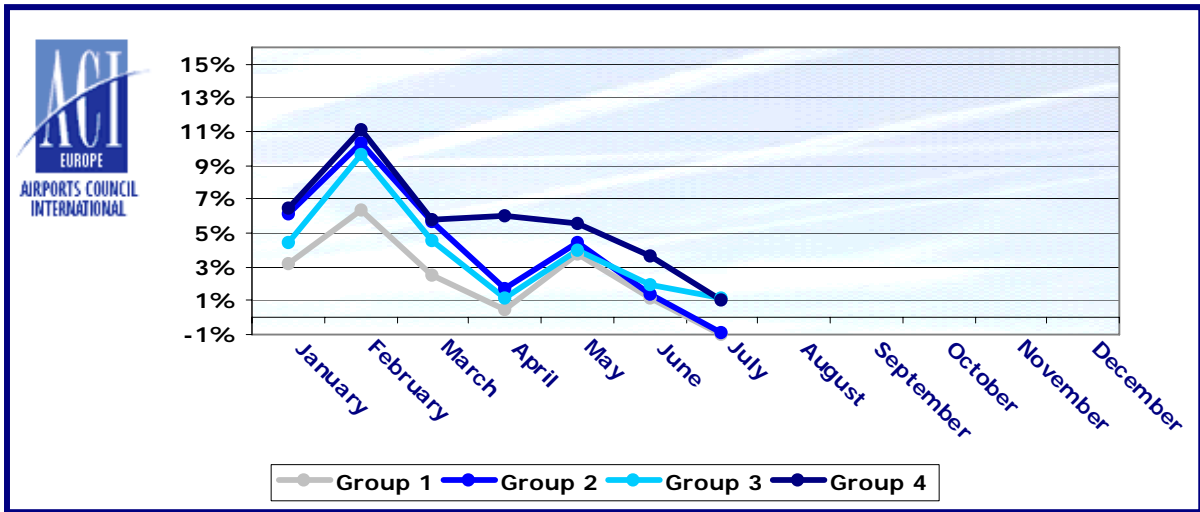
Group 4		
Airports welcoming less than 5 million passengers		
per year (percentage traffic variation July 2008 versus 2007 and 2006)		
Airport	2008v2007 variation %	2008v2006 variation %
IBZ	-4.3%	+3.2%
GRO	+12.0%	+50.9%
OTP	-19.6%	N/A
OPO	+10.5%	+26.6%
MAH	-7.5%	-4.7%
BSL/ML	+1.6%	+8.1%
BLQ	-7.2%	-0.1%
HHN	+3.5%	+16.1%
BIO	-5.5%	+8.5%
VRN	-8.8%	+4.1%
FUE	-4.3%	-3.0%
BGO	+8.8%	+10.2%
TFN	+10.2%	+14.8%
SVQ	-5.2%	+19.7%
RIX	+21.9%	+57.4%
MLA	+1.3%	+13.7%
GOT	+2.9%	+4.6%
BOD	+4.1%	+13.8%
NUE	-4.5%	+11.6%
ABZ	-2.6%	+7.7%
TRN	-4.8%	+7.1%
KTW	+27.2%	N/A
SOF	+17.1%	+44.8%
SVG	+3.9%	+8.0%
TRD	+1.7%	+3.6%
BRI	+6.1%	+26.7%
VNO	+26.2%	+39.8%
FNC	-3.1%	+1.8%
LJU	+10.2%	+22.4%
SOU	-1.8%	-2.4%
DBV	+1.6%	N/A
FLR	+1.5%	-1.3%
TLL	+7.5%	+14.3%
TOS	+0.5%	+2.2%
BOO	-3.7%	+2.8%
MMX	-8.5%	-0.8%
SXB	-14.1%	-26.0%
BDS	+9.1%	+19.7%
BMA	+3.2%	+26.8%
SKP	+5.6%	+23.2%
LGG	+8.4%	+18.1%
KRS	-3.0%	+0.7%
AES	+10.4%	+11.7%
HAU	+19.8%	+10.5%
OHD	-1.8%	N/A
wa*	+1.0%	+11.6%

*weighted average=SUM(%change*pax)/SUM(pax)



Year-to-date airport passenger trends

The graphic illustrates and compares the trends of the different airport Groups 1, 2, 3 and 4 for 2008.



The graphic compares the amount of total commercial passengers 2008 with 2007. The airports included, in this graphic, are: LHR, FRA, CDG, AMS, MAD, LGW, FCO, MUC, BCN, ORY, STN, MAN, MXP, ZRH, CPH, ARN, DUB, OS L, BRU, VIE, DUS, ATH, PMI, AGP, DME, HEL, TXL, LIS, HAM, PRG.

