



Airport Traffic Report

May 2008

European passenger traffic up 4.3% during May 2008

The '**ACI EUROPE Airport Traffic Report - May 2008**' includes **107 airports** in total.

The overall **passenger** traffic at European airports increased by **+4.3%** in **May 2008** compared with May 2007. The overall **freight** traffic among European airports decreased **-0.2%** in May 2008 when compared with the corresponding month in 2007. The overall figure for **movements** at European airports increased **0.8%** in May 2008 when compared with May 2007.

Passenger figures for May 2008 indicate that Group 4 airports (airports welcoming less than 5 million passengers per year) had the largest increase in traffic - with an average increase of **+5.6%** when compared with May 2007 - and an average increase of **+12.8%** when compared with May 2006.

Airports welcoming more than 25 million passengers per year (Group 1), airports welcoming between 10 and 25 million passengers (Group 2) and airports welcoming between 5 and 10 million passengers (Group 3) reported an average increase of **+3.8%**, **+4.4%** and **+4.0%** respectively when compared with May 2007. The same comparison of May 2008 with May 2006 demonstrates an average increase of **+7.1%**, **+8.5%** and **+6.4%** respectively.

Examples of airports that experienced the highest increase in passenger traffic per group, when comparing May 2008 with May 2007, include:

- **Group 1 airports** – Rome Fiumicino (**+16.6%**), Munich (**+7.4%**), Paris Charles de Gaulle (**+7.2%**) and Paris Orly (**5.6%**);
- **Group 2 airports** – Moscow- Domodedovo (**+26.5%**), Vienna (**+13.2%**), Zurich (**+12.5%**) and Berlin (**+11.6%**);
- **Group 3 airports** – Moscow-Vnukovo (**+29.5%**), Milan/Orio al Serio (**+21.4%**), Lyon (**+16.2%**) and Nottingham East Midlands (**+10.6%**);
- **Group 4 airports** – Vilnius (**+29.2%**), Ohrid (**+27.6%**), Sofia (**+26.3%**) and Porto (**+21.8%**).

Airports		Passengers				Commercial movements		Freight (metric tonnes)	
		May 2008	2008v 2007 variation %	January – May	2008v 2007 variation %	May 2008	2008v 2007 variation %	May 2008	2008v 2007 variation %
1	London Heathrow (LHR)	5,655,300	0.5%	26,566,000	-0.4%	40,824	0.5%	123,862	11.0%
2	Paris Roissy (CDG)	5,403,600	7.2%	24,122,300	3.9%	48,428	4.1%	N/A	N/A
3	Frankfurt (FRA)	4,741,700	1.6%	21,455,600	2.8%	41,484	-0.4%	174,545	4.0%
4	Madrid (MAD)	4,509,200	4.0%	21,204,800	6.1%	40,856	-2.6%	26,887	2.1%
5	Amsterdam (AMS)	4,406,000	2.5%	18,435,500	1.6%	39,172	-0.9%	130,646	3.3%
6	Rome-Fiumicino (FCO)	3,355,900	16.6%	13,502,400	10.3%	31,036	13.6%	13,143	15.2%
7	Munich (MUC)	3,159,700	7.4%	13,838,600	6.5%	36,511	1.6%	19,926	-0.4%
8	London Gatwick (LGW)	3,048,900	1.1%	13,078,600	2.8%	23,063	1.2%	7,049	-49.3%
9	Barcelona (BCN)	2,760,400	-4.7%	12,294,700	-0.6%	28,,192	-10.0%	9,164	1.7%
10	Palma de Mallorca (PMI)	2,482,400	5.4%	7,114,800	2.2%	20,148	-0.3%	2,083	-4.7%
11	Paris Orly (ORY)	2,300,000	5.6%	10,715,600	1.1%	19,770	-0.6%	N/A	N/A
12	Dublin (DUB)	2,162,300	7.5%	9,138,400	5.8%	17,848	4.1%	9,170	5.6%
13	London Stansted (STN)	2,020,700	-3.3%	8,711,300	-4.4%	16,151	-5.3%	17,220	-0.6%
14	Manchester (MAN)	2,014,700	1.2%	8,004,400	-0.1%	17,787	-5.4%	12,007	-6.4%
15	Zurich (ZRH)	1,951,800	12.5%	8,668,800	10.0%	20,327	5.4%	24,094	12.9%
16	Copenhagen (CPH)	1,940,000	4.4%	8,652,300	6.0%	23,344	4.8%	N/A	N/A
17	Moscow-Domodedovo (DME)	1,853,200	26.5%	7,530,000	24.4%	17,211	17.5%	11,469	14.9%
18	Vienna (VIE)	1,840,900	13.2%	7,814,200	14.2%	23,218	6.1%	15,065	-5.2%
19	Stockholm-Arlanda (ARN)	1,715,700	9.1%	7,577,700	6.5%	19,875	11.8%	9,190	1.9%
20	Brussels (BRU)	1,715,000	8.0%	7,276,100	11.9%	20,872	-1.6%	51,305	-9.9%
21	Oslo (OSL)	1,705,800	1.8%	7,809,000	7.7%	20,101	1.8%	5,419	-7.6%
22	Düsseldorf (DUS)	1,686,300	6.9%	6,863,100	5.8%	19,115	1.1%	6,405	41.6%
23	Athens (ATH)	1,519,000	1.2%	5,957,700	2.0%	15,742	-2.8%	9,961	13.0%
24	Milan-Malpensa (MXP)	1,438,500	-25.8%	8,220,800	-9.6%	16,457	-25.1%	36,742	-10.4%
25	Berlin (TXL)	1,299,800	11.6%	5,777,300	16.9%	13,552	7.4%	1,483	13.9%
26	Malaga (AGP)	1,257,200	-1.2%	4,808,100	-1.1%	10,740	-6.2%	413	-17.2%

Airports		Passengers				Commercial movements		Freight (metric tones)	
		May 2008	2008v 2007 variation %	January – May	2008v 2007 variation %	May 2008	2008v 2007 variation %	May 2008	2008v 2007 variation %
27	Lisbon (LIS)	1,194,200	5.1%	5,196,600	5.0%	11,848	-2.6%	8,086	8.7%
28	Hamburg (HAM)	1,160,300	3.6%	5,106,000	6.2%	13,410	2.1%	6,486	0.4%
29	Prague (PRG)	1,148,600	8.9%	4,660,800	6.0%	15,643	3.7%	3,466	-17.2%
30	Helsinki (HEL)	1,109,700	1.7%	5,423,100	3.9%	16,238	3.7%	11,738	7.5%
31	Nice (NCE)	1,033,200	2.7%	3,910,300	3.2%	12,311	-0.3%	627	-22.3%
32	Cologne/Bonn (CGN)	962,500	-0.1%	3,841,000	-1.5%	11,541	-9.9%	48,372	-21.5%
33	Stuttgart (STR)	939,100	1.1%	3,772,400	-0.8%	11,512	-3.4%	1,509	-2.0%
34	Alicante (ALC)	908,000	9.9%	3,630,800	14.0%	7,366	3.1%	335	-8.7%
35	Geneva (GVA)	880,800	10.1%	5,138,700	10.2%	10,816	2.5%	2,544	-3.0%
36	Birmingham (BHX)	877,500	5.7%	3,532,300	6.0%	9,243	-1.5%	962	-2.1%
37	Milan Linate (LIN)	871,400	-2.9%	3,959,400	0.3%	8,594	2.4%	1,442	-8.4%
38	Edinburgh (EDI)	810,200	0.6%	3,491,400	2.7%	10,163	0.4%	966	-32.0%
39	Glasgow (GLA)	737,300	-9.3%	3,021,900	-4.6%	7,944	-6.5%	327	-18.5%
40	Budapest (BUD)	735,800	0.1%	3,115,200	2.6%	9,601	-7.0%	5,488	5.4%
41	Moscow- Vnukovo (VKO)	724,000	29.5%	N/A	N/A	12,414	25.3%	2,773	29.1%
42	Gran Canaria (LPA)	720,400	2.1%	4,443,400	2.1%	8,617	8.3%	2,834	-6.3%
43	Lyon (LYS)	694,500	16.2%	3,167,500	9.2%	10,704	0.7%	2,279	-10.2%
44	Venice (VCE)	656,000	2.7%	2,653,800	3.2%	6,616	-8.5%	2,138	20.4%
45	Marseille (MRS)	615,900	3.0%	2,654,800	1.5%	8,181	-2.5%	3,633	17.7%
46	Naples (NAP)	569,600	2.7%	2,171,200	5.8%	5,628	-4.4%	107	-55.6%
47	Milan/Orio al Serio (BGY)	564,400	21.4%	2,525,400	14.9%	5,251	10.1%	10,454	-11.4%
48	Toulouse (TLS)	560,000	6.1%	2,593,900	4.5%	7,048	1.1%	4,077	-0.3%
49	Tenerife Sur (TFS)	543,100	5.7%	3,751,900	3.7%	4,097	3.6%	723	7.5%
50	Nottingham East Midlands (EMA)	535,200	10.6%	2,185,900	12.3%	6,312	8.8%	21,751	-7.5%
51	Hanover (HAJ)	528,900	4.3%	2,086,300	2.7%	N/A	N/A	1,453	39.3%
52	Girona (GRO)	510,200	18.6%	2,122,000	28.9%	3,770	14.6%	12	27.4%
53	Faro (FAO)	614,500	5.3%	1,740,000	0.3%	4,468	5.1%	52	-7.9%

Airports		Passengers				Commercial movements		Freight (metric tones)	
		May 2008	2008v 2007 variation %	January – May	2008v 2007 variation %	May 2008	2008v 2007 variation %	May 2008	2008v 2007 variation %
54	Valencia (VLC)	506,600	0.0%	2,380,000	7.0%	7,004	-3.7%	1,068	-5.9%
55	Ibiza (IBZ)	436,400	4.0%	969,100	2.6%	4,951	6.0%	355	-8.2%
56	Lanzarote (ACE)	423,200	5.4%	2,271,300	3.5%	4,201	9.4%	489	6.1%
57	Rome-Ciampino (CIA)	415,000	-14.9%	1,925,200	-13.3%	2,986	-19.4%	1,780	-17.5%
58	Sevilla (SVQ)	404,700	0.1%	1,879,800	7.6%	4,397	-2.6%	400	-42.2%
59	Basel-Mulhouse (BSL/ML)	400,600	6.8%	1,618,300	1.6%	5,184	3.9%	3,270	-16.7%
60	Goteborg (GOT)	400,000	2.1%	1,777,900	4.3%	5,804	5.7%	4,282	-25.4%
61	Porto (OPO)	399,700	21.8%	1,728,200	20.6%	4,815	15.1%	2,551	-9.0%
62	Hahn (HHN)	381,300	6.3%	1,448,200	-7.6%	3,716	11.8%	9,947	28.2%
63	Bilbao (BIO)	373,600	0.3%	1,707,900	8.0%	4,602	-9.4%	292	-1.4%
64	Tenerife Norte (TFN)	371,000	7.1%	1,683,400	0.9%	5,299	7.7%	1,795	-14.2%
65	Bergen (BGO)	362,200	-13.1%	1,861,500	3.8%	5,505	-15.4%	209	-70.4%
66	Nuremberg (NUE)	346,600	0.2%	1,784,100	7.3%	5,017	-10.2%	752	-17.7%
67	Fuerteventura (FUE)	344,500	2.8%	1,808,800	1.5%	3,396	3.8%	235	-9.0%
68	Bordeaux (BOD)	338,300	13.5%	1,387,600	4.9%	4,907	9.3%	1,042	90.0%
69	Riga (RIX)	319,500	17.4%	1,313,000	18.2%	4,878	18.7%	442	-45.0%
70	Verona (VRD)	314,500	11.9%	1,204,900	7.3%	3,316	4.0%	649	-15.8%
71	Turin (TRN)	303,500	4.6%	1,515,900	3.8%	4,035	-3.9%	97	22.8%
72	Stavanger (SVG)	302,700	2.6%	1,443,100	10.8%	4,374	-6.5%	401	39.8%
73	Trondheim (TRD)	301,900	0.6%	1,415,000	5.6%	4,125	-0.8%	187	-24.9%
74	Aberdeen (ABZ)	297,500	-1.4%	1,315,800	-1.5%	9,125	-1.5%	348	-6.5%
75	Sofia (SOF)	286,700	26.3%	1,255,200	18.9%	3,744	17.7%	1,477	5.4%
76	Menorca (MAH)	265,600	1.1%	610,200	-0.1%	2,810	-6.1%	298	-10.1%
77	Bari (BRI)	235,000	14.2%	985,200	11.5%	2,667	15.9%	121	-9.4%
78	Glasgow Prestwick (PIK)	222,100	0.7%	N/A	N/A	1,963	3.6%	2,705	5.2%
79	Florence (FLR)	201,200	8.9%	775,000	5.4%	2,859	12.2%	8	39.3%
80	Vilnius (VNO)	192,300	29.2%	780,500	34.0%	3,446	31.0%	339	-9.2%

Airports		Passengers				Commercial movements		Freight (metric tones)	
		May 2008	2008v 2007 variation %	January – May	2008v 2007 variation %	May 2008	2008v 2007 variation %	May 2008	2008v 2007 variation %
81	Southampton (SOU)	187,100	6.9%	769,800	5.4%	4,143	-3.3%	20	-13.0%
82	Stockholm-Bromma (BMA)	180,100	-0.3%	808,600	5.3%	3,433	8.8%	33	120.0%
83	Malmö (MMX)	177,400	2.1%	738,100	-3.8%	2,450	2.2%	2,460	-29.6%
84	Tallinn (TLL)	166,000	14.1%	724,700	13.1%	3,109	12.9%	4,033	166.2%
85	Ljubljana (LJU)	149,700	21.1%	553,200	15.3%	3,073	4.0%	744	-32.7%
86	Tromsø (TOS)	142,900	0.4%	670,400	5.9%	2,546	-6.1%	182	-6.0%
87	Dubrovnik (DBV)	138,500	14.6%	294,900	11.0%	1,300	8.2%	80	20.0%
88	Bodø (BOO)	128,900	-5.9%	600,400	1.2%	2,981	-7.7%	141	0.9%
89	Strasbourg (SXB)	118,000	-31.0%	540,900	-31.4%	2,901	-11.7%	28	-48.1%
90	Bournemouth (BOH)	100,300	5.9%	N/A	N/A	1,089	-1.0%	2	-92.9%
91	Brindisi (BDS)	87,900	13.6%	349,900	10.1%	919	37.0%	20	61.7%
92	Alesund (AES)	73,600	7.9%	318,300	7.1%	916	3.3%	90	8.9%
93	Kristiansand (KRS)	68,800	-11.6%	349,300	2.6%	1,550	-10.4%	43	-13.5%
94	Skopje (SKP)	55,500	13.3%	234,500	9.8%	881	4.3%	162	12.2%
95	Haugesund (HAU)	48,700	17.0%	209,300	1.5%	698	2.9%	28	15.5%
96	Humberside (HUY)	45,400	-6.0%	N/A	N/A	1,239	-4.6%	106	-68.3%
97	Liege (LGG)	32,200	10.5%	87,000	6.4%	2,197	-7.5%	38,802	-0.9%
98	Ohrid (OHD)	3,491	27.6%	N/A	N/A	56	7.7%	0	-73.5%
99	Liverpool (LPL)	N/A	N/A	N/A	N/A	N/A	N/A	N/A	N/A
100	Warsaw (WAW)	N/A	N/A	N/A	N/A	N/A	N/A	N/A	N/A
101	Madeira (FNC)	N/A	N/A	N/A	N/A	N/A	N/A	N/A	N/A
102	Malta (MLA)	N/A	N/A	N/A	N/A	N/A	N/A	N/A	N/A
103	Katowice (KTW)	N/A	N/A	N/A	N/A	N/A	N/A	N/A	N/A
104	Bucharest (OTP)	N/A	N/A	N/A	N/A	N/A	N/A	N/A	N/A
105	Bologna (BLQ)	N/A	N/A	N/A	N/A	N/A	N/A	N/A	N/A
106	Olbia (OLB)	N/A	N/A	N/A	N/A	N/A	N/A	N/A	N/A
107	Charleroi (CRL)	N/A	N/A	N/A	N/A	N/A	N/A	N/A	N/A

----- Preliminary traffic figures -----

Total commercial passengers

International passengers (enplaned + deplaned) + **domestic passengers** (enplaned + deplaned) + **direct transit passengers** (passengers who arrive at and depart from the airport on a flight bearing the same number. They are counted only ONCE).

Commercial movements

Landing or take off of an aircraft operating a scheduled or non scheduled commercial service.

Freight

Freight loaded and unloaded (arriving or departing) at the airport. Freight comprises goods, newspapers, diplomatic bags, parcel post and express parcel.

**The ten largest airports on freight – reporting to
ACI EUROPE**
(metric tonnes)

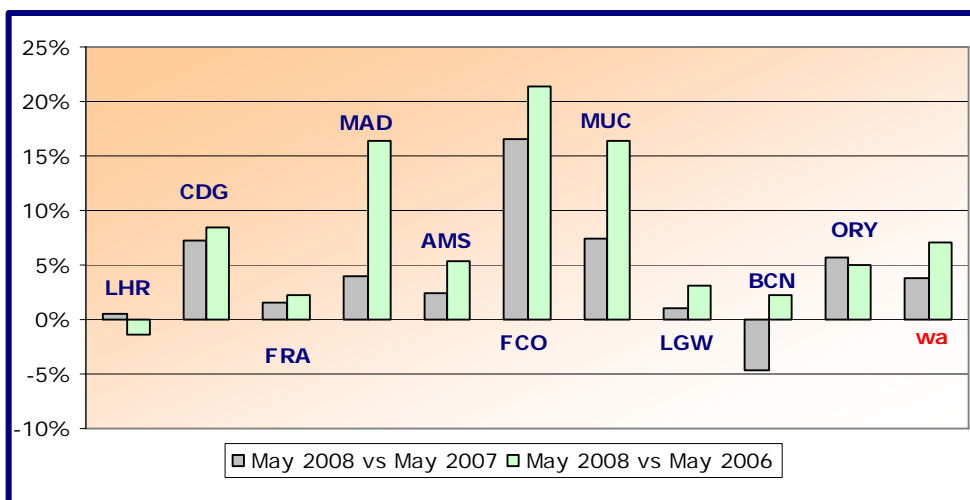
Airports		May 2008	2008v2007 variation %
1	Frankfurt (FRA)	174,545	4.0%
2	Amsterdam (AMS)	130,646	3.3%
3	London Heathrow (LHR)	123,862	11.0%
4	Brussels (BRU)	51,305	-9.9%
5	Cologne/Bonn (CGN)	48,372	-21.5%
6	Liege (LGG)	38,802	-0.9%
7	Milan-Malpensa (MXP)	36,742	-10.4%
8	Madrid (MAD)	26,887	2.1%
9	Zurich (ZRH)	24,094	12.9%
10	Nottingham East Midlands (EMA)	21,751	-7.5%

Group 1

**Airports welcoming more than 25 million passengers per year
(percentage traffic variation May 2008 versus 2007 and 2006)**

Airport	2008v2007 variation %	2008v2006 variation %
LHR	+0.5%	-1.3%
CDG	+7.2%	+8.5%
FRA	+1.6%	+2.2%
MAD	+4.0%	+16.3%
AMS	+2.5%	+5.4%
FCO	+16.6%	+21.3%
MUC	+7.4%	+16.4%
LGW	+1.1%	+3.2%
BCN	-4.7%	+2.2%
ORY	+5.6%	+5.0%
wa*	+3.8%	+7.1%

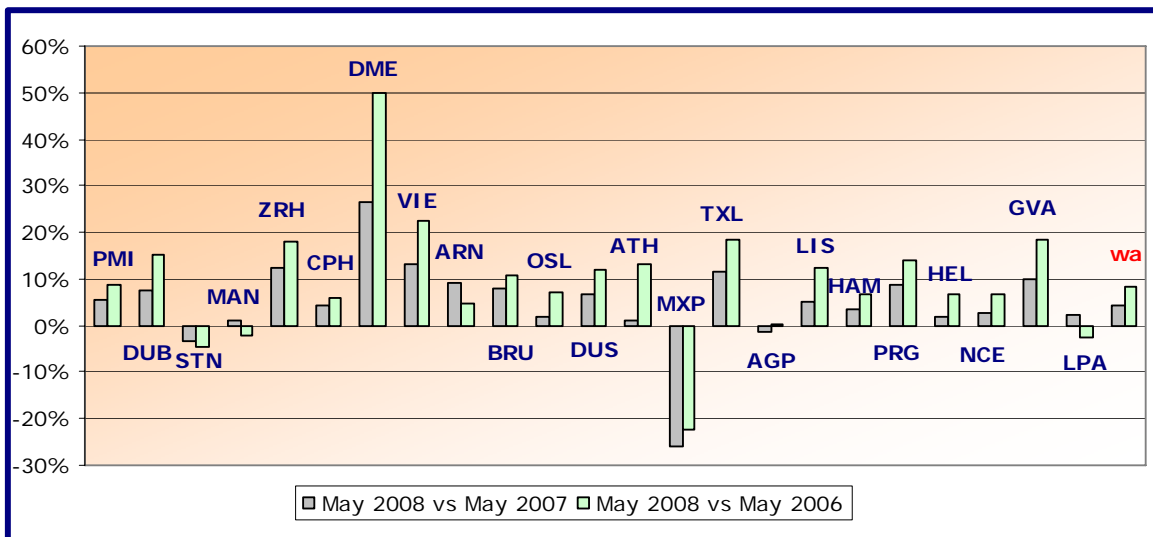
*weighted average = SUM(%change * pax) / SUM(pax)



Group 2
Airports welcoming between 10 and 25 million passengers
per year (percentage traffic variation May 2008 versus 2007 and 2006)

Airport	2008v2007 variation %	2008v2006 variation %
PMI	+5.4%	+8.8%
DUB	+7.5%	+15.0%
STN	-3.3%	-4.4%
MAN	+1.2%	-2.0%
ZRH	+12.5%	+18.1%
CPH	+4.4%	+6.0%
DME	+26.5%	+50.1%
VIE	+13.2%	+22.3%
ARN	+9.1%	+4.6%
BRU	+8.0%	+10.8%
OSL	+1.8%	+7.1%
DUS	+6.9%	+11.8%
ATH	+1.2%	+13.1%
MXP	-25.8%	-22.3%
TXL	+11.6%	+18.3%
AGP	-1.2%	+0.3%
LIS	+5.1%	+12.4%
HAM	+3.6%	+6.7%
PRG	+8.9%	+13.8%
HEL	+1.7%	+6.7%
NCE	+2.7%	+6.7%
GVA	+10.1%	+18.5%
LPA	+2.1%	-2.6%
wa*	+4.4%	+8.5%

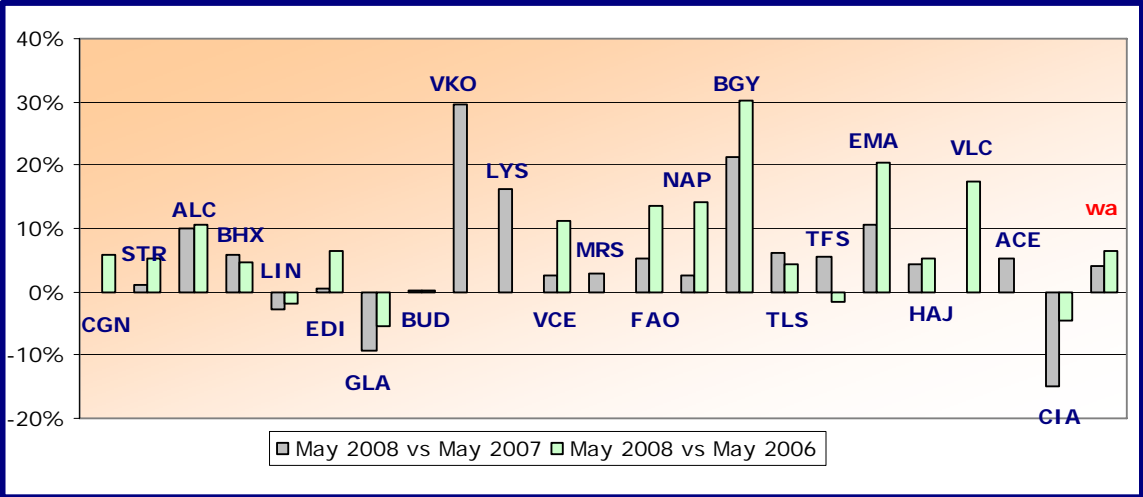
*weighted average = $\text{SUM}(\% \text{change} * \text{pax}) / \text{SUM}(\text{pax})$



Group 3
Airports welcoming between 5 and 10 million passengers
per year (percentage traffic variation May 2008 versus 2007 and 2006)

Airport	2008v2007 variation %	2008v2006 variation %
CGN	-0.1%	+5.7%
STR	+1.1%	+5.1%
ALC	+9.9%	+10.6%
BHX	+5.7%	+4.8%
LIN	-2.9%	-2.0%
EDI	+0.6%	+6.5%
GLA	-9.3%	-5.5%
BUD	+0.1%	+0.3%
VKO	+29.5%	N/A
LYS	+16.2%	N/A
VCE	+2.7%	+11.1%
MRS	+3.0%	N/A
FAO	+5.3%	+13.6%
NAP	+2.7%	+14.0%
BGY	+21.4%	+30.3%
TLS	+6.1%	+4.3%
TFS	+5.7%	-1.7%
EMA	+10.6%	+20.3%
HAJ	+4.3%	+5.3%
VLC	+0.0%	+17.3%
ACE	+5.4%	N/A
CIA	-14.9%	-4.5%
wa*	+4.0%	+6.4%

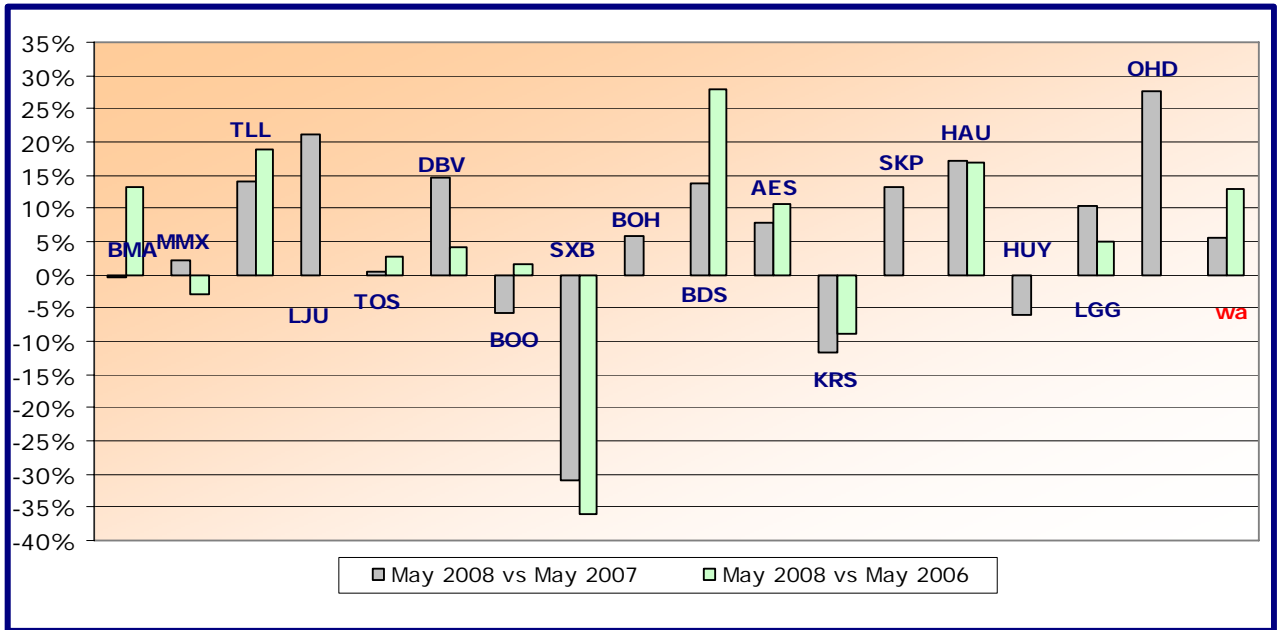
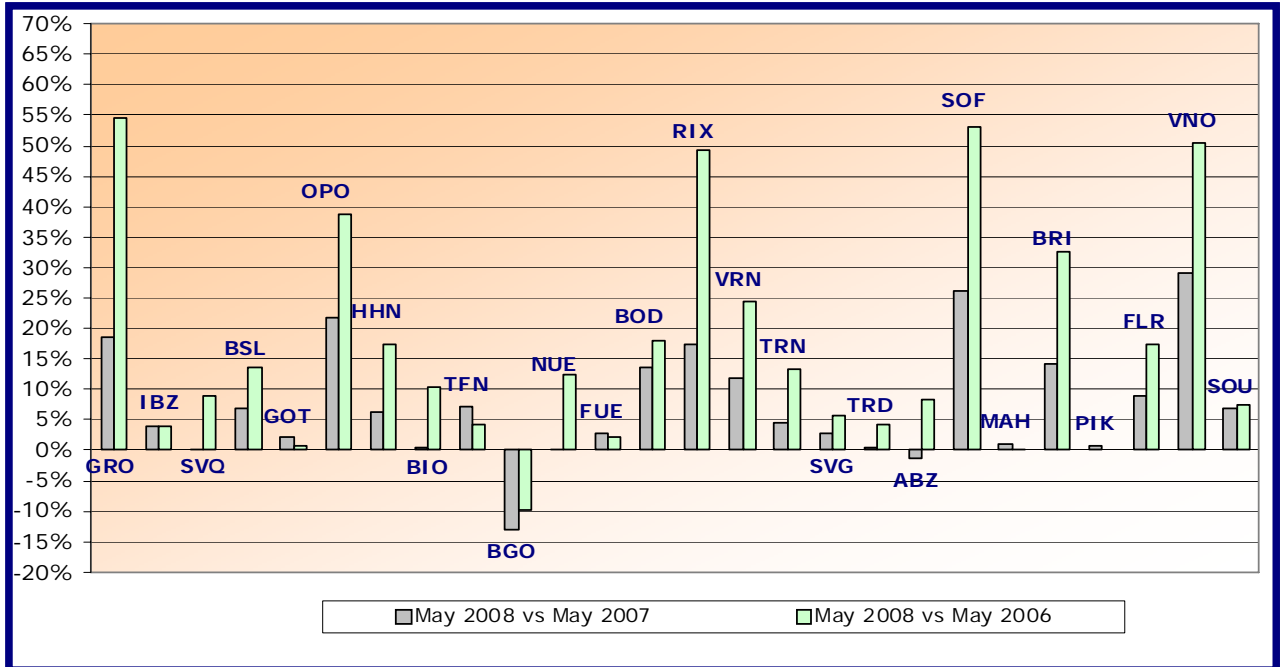
*weighted average=SUM(%change*pax)/SUM(pax)



Group 4
Airports welcoming less than 5 million passengers
per year (percentage traffic variation May 2008 versus 2007 and 2006)

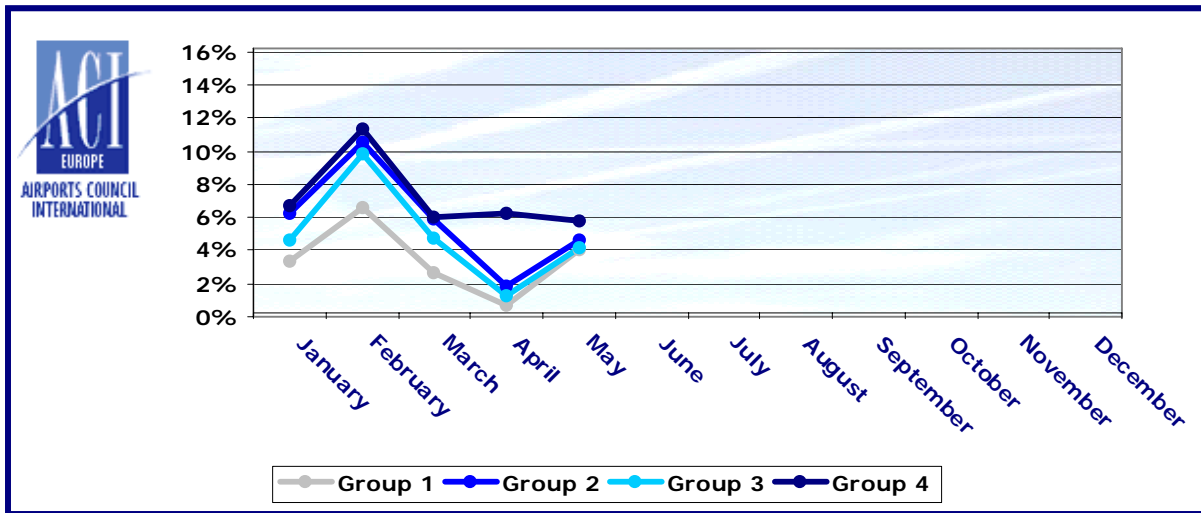
Airport	2008v2007 variation %	2008v2006 variation %
GRO	+18.6%	+54.5%
IBZ	+4.0%	+3.8%
SVQ	+0.1%	+9.0%
BSL/ML	+6.8%	+13.5%
GOT	+2.1%	+0.8%
OPO	+21.8%	+38.7%
HHN	+6.3%	+17.3%
BIO	+0.3%	+10.5%
TFN	+7.1%	+4.1%
BGO	-13.1%	-9.8%
NUE	+0.2%	+12.3%
FUE	+2.8%	+2.2%
BOD	+13.5%	+17.9%
RIX	+17.4%	+49.2%
VRN	+11.9%	+24.3%
TRN	+4.6%	+13.4%
SVG	+2.6%	+5.8%
TRD	+0.6%	+4.2%
ABZ	-1.4%	+8.5%
SOF	+26.3%	+53.2%
MAH	+1.1%	+0.1%
BRI	+14.2%	+32.6%
PIK	+0.7%	N/A
FLR	+8.9%	+17.4%
VNO	+29.2%	+50.5%
SOU	+6.9%	+7.5%
BMA	-0.3%	+13.3%
MMX	+2.1%	-2.9%
TLL	+14.1%	+18.9%
LJU	+21.1%	N/A
TOS	+0.4%	+2.8%
DBV	+14.6%	+4.1%
BOO	-5.9%	+1.5%
SXB	-31.0%	-36.1%
BOH	+5.9%	N/A
BDS	+13.6%	+27.8%
AES	+7.9%	+10.5%
KRS	-11.6%	-9.0%
SKP	+13.3%	N/A
HAU	+17.0%	+17.0%
HUY	-6.0%	N/A
LGG	+10.5%	+4.9%
OHD	+27.6%	N/A
wa*	+5.6%	+12.8%

*weighted average = $\text{SUM}(\% \text{change} * \text{pax}) / \text{SUM}(\text{pax})$



Year-to-date airport passenger trends

The graphic illustrates and compares the trends of the different airport Groups 1, 2, 3 and 4 for 2008.



The graphic compares the amount of total commercial passengers 2008 with 2007. The airports included, in this graphic, are: LHR, FRA, CDG, AMS, MAD, LGW, FCO, MUC, BCN, ORY, STN, MAN, MXP, ZRH, CPH, ARN, DUB, OSL, BRU, VIE, DUS, ATH, PMI, AGP, DME, HEL, TXL, LIS, HAM, PRG.

